


BON VIVEUR

The comfortable and
hassle-free way to enjoy
France by boat





It's plain sailing with a relaxing boat share

Boat shares are a cost-effective and hassle-free way to explore canals and rivers in comfort and at your own pace.

Now is your chance to experience all that a boat share in France can offer.

You now have the chance to purchase a share of the **Bon Viveur**

This beautiful river cruiser offering the very best specification available at a remarkably affordable cost

The Bon Viver



-
- A well-maintained, attractive 15 metre/50 ft by 4 metre/13ft canal and river cruiser.
 - Large enough to accommodate four or more in comfort and style
 - Extremely easy to manoeuvre, thanks to bow and stern thrusters.
 - Optimal size for cruising and mooring on French waterways.
 - Built in 2005 from tough, fibre-reinforced epoxy composite and panelled throughout in both solid oak and oak veneer.
 - The single diesel engine is a reliable Beta/Ford/Bowman Marine, 5 litres, 4 cylinder, 85 HP with Vetus hydraulic pump.
 - In lieu of a conventional marine gearbox, the engines' variable pump drives the main prop together with the bow thruster and a stern thruster.



Owning a Boat Share

The boat is owned by an experienced, friendly syndicate of 10 to 14 shareholders who each own between 2 and 6 weeks between March and November.

Unusually, owners have the right to specific weeks - there is no rotation, although owners often swap weeks when convenient. Also, the boat has no permanent home - itineraries change every year to suit the needs and interests of shareholders.

Shareholders are encouraged to get involved in the management of the boat, each playing to their strengths. You will also be invited to attend the AGM to swap stories, share notes and make decisions about the next year's itinerary.

Costs

Shares on the boat can usually be bought for about £2-3,000 per week depending on time of year.

Annual contribution to syndicate running costs, covering maintenance, winter mooring, insurance etc. are typically about £750 per annum per week owned.

The boat has a continual programme of refurbishment and renewal. In 2022 for example, Bon Viveur had a complete kitchen refit. The quoted annual charge covers all such work.

The annual maintenance and improvement programme, and its associated budget, is discussed and agreed at the AGM



French waterway



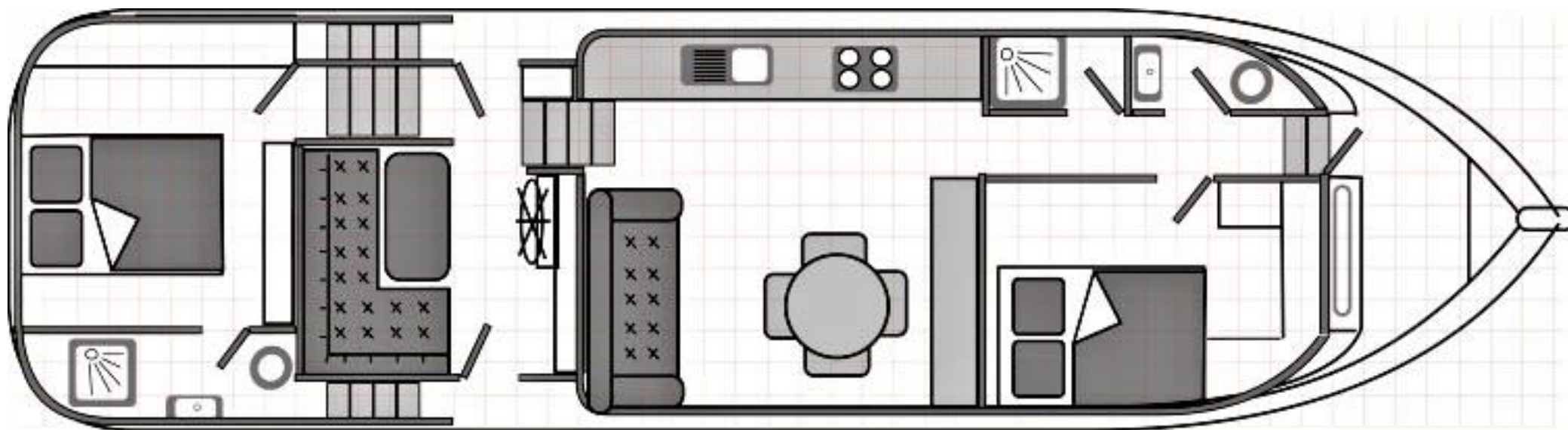
Aboard the Bon Viveur

Certification

The boat holds all necessary certificates and licences for cruising the French waterways.

For insurance purposes, there must be someone of certified competency on board when the boat is cruising.

If necessary, an owner can obtain this by undergoing a 2 day practical course and passing a theoretical exam, neither of which is onerous or expensive!



1sq = 1ft/300mm

Floorplan of The Bon Viveur

Capacities

Fuel tank approx 350L, Fresh water tank
Holding tank approx 800L
Starter battery
Service / inverter batteries 2 x 240 Ah
Alternator 2 x 150A
Inverter 230 V
DC Charger 50 A
Shore power 230V
Automatic and manual bilge pumps

Technical

1 kit engine spares - fan belts, impellers, oil filters, alternators - constantly updated
1 tool kit which allows for most on the go repairs and servicing
2 small sanders
1 kit toilet spares
1 instruction manual and one folder of manuals for all equipment
1 ship's log
1 SSR certificate

Deck Equipment

Aft boarding ladder
Stern navigation light
Rails around aft deck
External helm with ship's wheel, s/s
Engine controls and instruments
Thruster controls
Sliding roof, wheelhouse
Port and s/b navigation lights
2 Houdini roof hatches,
1 in fwd cabin 1 in saloon
anchor

1 x manual anchor winch
30m chain, 30m warp
6 s/s mooring bollards
6 mooring lines
4 mooring spikes
1 4lb hammer
10 finger fenders
2-4 'balloon' fenders medium

1 fold-down navigation and anchor lights
1 gang plank
2 poles with hooks
Flags and staff + securing device
1 shore power lead
2 13kg propane bottles (Europe) + regulators
4 adult slim-line life jackets and
four regular style

2 solar panels
Smart gauge for battery management

Electric cable and assorted connectors
2 x water hoses and assorted connectors

Bow and stern thrusters -Vetus hydraulic

Interior

Aft Cabin - trimmed and panelled in oak

5ft wide bed with good quality foam mattresses
storage below for tools and accessories
cupboards, drawers, wardrobe, large open shelved
storage area (takes cases)
Bedside tables with storage
3 pairs curtains with tie-backs
Carpeting
Central heating radiator
LED lights and reading lights
Electrical Sockets (UK)

Aft WC/shower

Sea toilet with hand pump
Basin with tiled vanity unit
Mirror and shaving mirror
Towel rail
Tiled shower cubicle with curtain
Electric shower pump-out
Lino
Central heating radiator
Fire extinguisher

Wheelhouse - trimmed and panelled in oak

L-shaped dinette with removable/washable upholstered (new
in 2018) foam cushions for conversion to double bed
Demountable table
One helmsman's stool
Ship's wheel, mahogany
Engine controls and instruments
Thruster controls
Double USB socket and 'cigarette lighter' style power socket
Curtains to make seating area private (one set)
carpeting
Central heating radiator
fire extinguisher
LED lights
Access to all fuses

Interior

Forward Cabin - trimmed and panelled in oak

4ft 6" wide bed with sprung mattresses

Three storage units below for duvets, pillows, and 'stuff' (duvets provided and regularly replaced but bring own linen)

Drawers, wardrobe, bed side unit and shelves

2 pairs curtains with tie-backs

Large mirror

Carpeting

Central heating radiator

Fire extinguisher

LED lighting

Forward WC

Sea toilet with hand pump

Basin with tiled vanity unit

Mirror

Towel rail

Lino

Central heating radiator

Forward shower

Tiled shower cubicle with curtain

Towel rail

Electric shower pump-out

Lino

Central heating radiator

Saloon - trimmed and panelled in oak

Slide-out sofa-bed with removable/washable upholstered foam cushions

Vacuum cleaner (stored under sofa bed)

Storage cupboards

Radiator, carpet

Fold away table

Storage/bedside unit on wheels

Galley

1 fridge: with small freezer compartment

1 propane cooker with 4 burners, grill and oven

Tiled worktop

Drawers and cupboards

All kitchen equipment - cutlery and crockery

fire extinguisher, fire blanket

Guided Tour



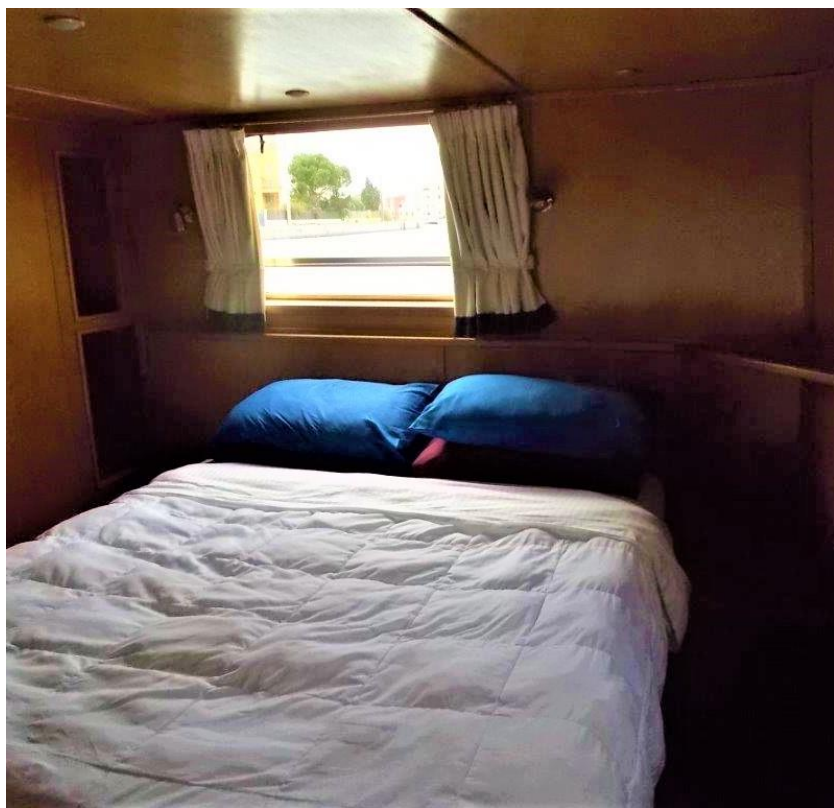
On the rear fly bridge/sun deck, over the rear cabin, there is a bimini to provide shaded, seating for 6-8 for dining, and a stainless steel wheel and controls. Steps lead down both sides to.....



...the wheelhouse cabin with a large sliding sunroof, an inside steering position, and access to the engine.



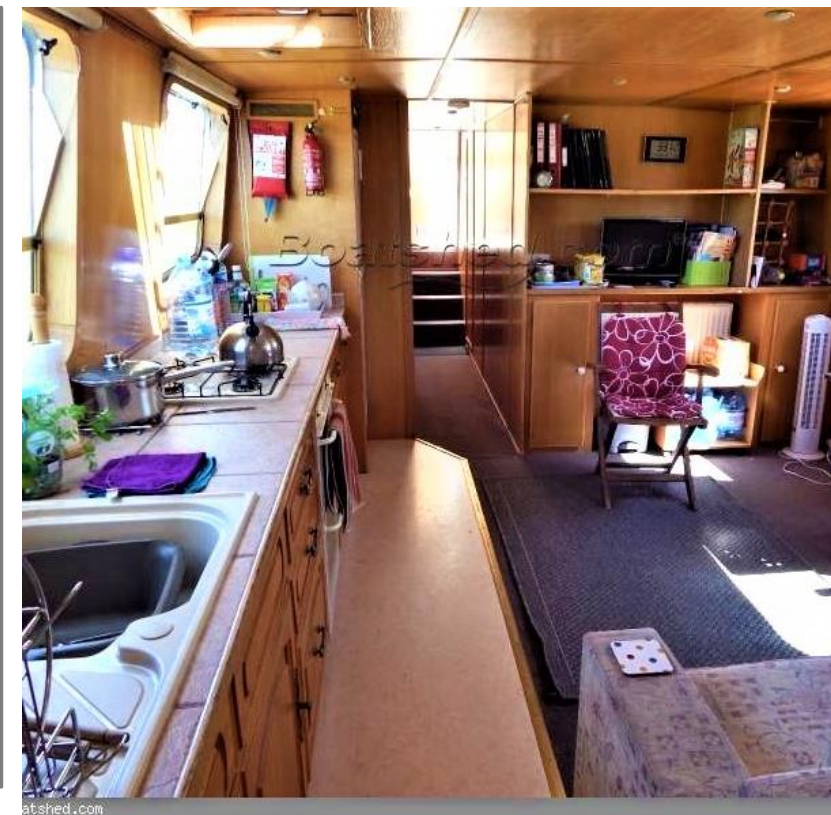
Seating in the wheelhouse - normally arranged as an 'L'-shaped dinette for 6-8 on a raised plinth for maximum visibility through the panoramic windows - can also be arranged to provide sleeping accommodation for two.



Steps down aft from the wheelhouse lead to a spacious king size, walk around double berth 'owner's' cabin.....



.....with en suite shower and WC.



Steps down forward lead to the saloon which offers a sofa that converts to a double bed and a large, well equipped galley.



A companionway leads forward...



...to a separate WC and shower on the left...



...and a double 'guest' cabin on the right. A bow door leads to the bow front which has seating with storage and access to gas bottles.

If you like the sound of boat share in France in general, and the Bon Viveurs in particular, why not get in touch with us?

Let us know what you are looking for – how many weeks and at what time of the year – and we will see if we can meet your needs. If not, we can put you on the waiting list

Tel: +353 877435993

Email: stuartkinnear@yahoo.com

www.boatsharefrance.com

